

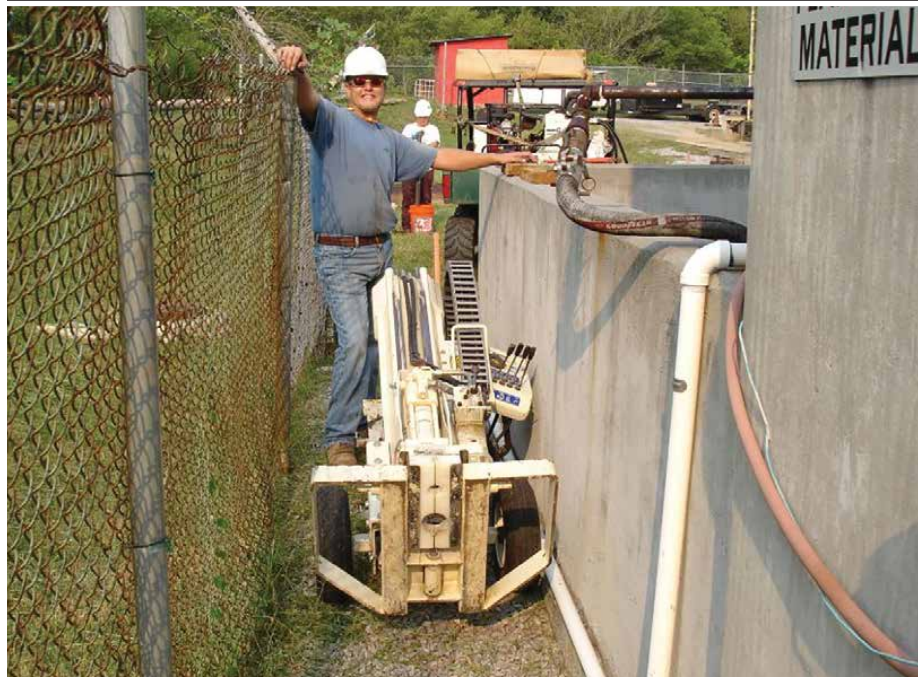
540MT Features

- Limited Access Direct Push Capabilities
- Reliable Geoprobe® GH40 Hammer System
- Bi-directional Hammer Rotation for Concrete Drilling
- 54-in. Stroke Accommodates 48-in. Tooling
- Uses Remote Hydraulic Source
- Cart Mounted with Rear Stabilization Legs
- Quick Connects Easily Attach to Remote Power Unit
- Optional Telescoping Mast for Low Clearance Work



A 540MT is used for geotechnical surveys at a potential mining site in Greenland.

Using the 540MT inside a building to collect DT22 samples to delineate a UST plume and determine site lithology.



At 35 in. wide, this little machine fits through some tight spots.

Tooling

Typical Geoprobe® Tooling for the 540MT

- 48-in. Direct Push Tooling
- Probe Rod Sizes: 2.25 in., 1.5 in., 1.25 in.
- Macro Core® MC5 Soil Sampling
- LB Soil Sampling
- DT22 Soil Sampling



Videos, Photos, Specifications, and Resources
geoprobe.com/540mt