

Geoprobe® 20CPT Press

20CPT Press Features

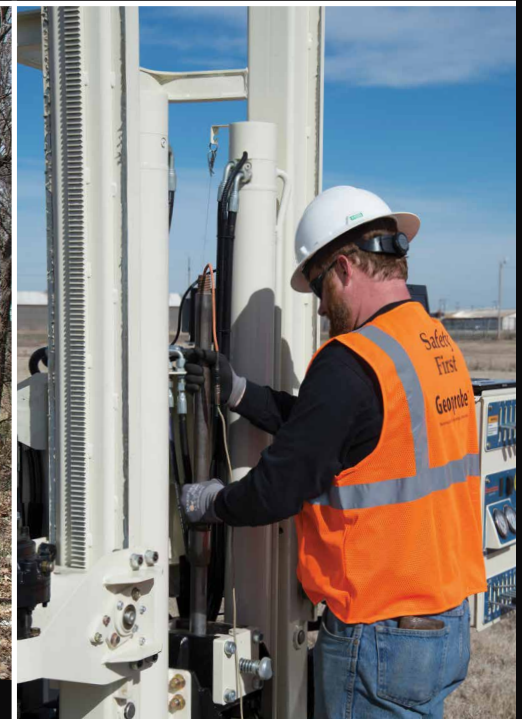
- 20-tons of downforce (anchored)
- 30-tons of pull
- Interchangeable with drill mast on 6712DT
- Quick mounts to skid steers (different mounting connection than 6712DT)
- Hydraulic rod clamp
- Hydraulic bottom clamp
- 54-in. stroke
- Front outriggers
- Head down pressure gauge



The Geoprobe® 20CPT Press mounted on a 6712DT.



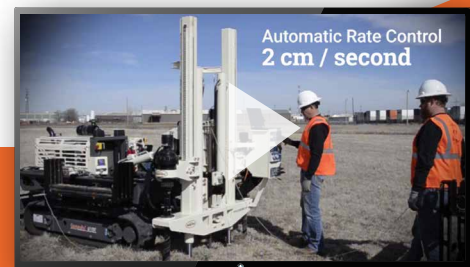
The Geoprobe® 20CPT Press mounted on a skid steer.



Tooling

Typical Geoprobe® Tooling for the 20CPT Press

- 48 in. CPT or Direct Image® tooling
- Direct Image® Tooling
- Probe Rod size 1.42 in. (36mm) cone rod or 1.5 in. Geoprobe® rod
- Adaptable to other rod sizes where applicable (1.75 in. when using DI Tooling)
- Cone Penetration Test Tooling



Videos, Photos, Specifications, Resources
geoprobe.com/20cpt