

Geoprobe® 3135GT Geotech Drill Rig

Telescoping Winch Mast

- Primary winch
 - 6,800 lbf
- Secondary winch options
 - 2,500 lbf
 - 1,800 lbf (quick change hook)
 - 1,100 lbf (quick change hook)
- Third winch - optional
 - 1,100 lbf (quick change hook, wireline)

Drill Mast

- 105 inches of head feed travel
- 36,000 lb. of push force
- 48,000 lb. of pull force
- Extend, swing, mast dump, oscillation, and fold
- CPT feed rate and hydraulic limit functions are standard
- Mast dump provides 36.5 inches of vertical travel to allow room for a mud pan
- Pivoting winch mast option lowers transport height by 15 inches

28 inches of Head Side Shift

Swing-Out 7-inch Breakout

More Power, More Speed More Applications

Drillers looking to increase their versatility without compromising speed or power can depend on the 3135GT geotech rig. With 10,000 ft-lb of torque and 1,000 rpm, this compact rig is suited not only for geotechnical projects, but also environmental, exploration, and construction projects.

Geotech Head Options

(All functions are available along the head side shift)

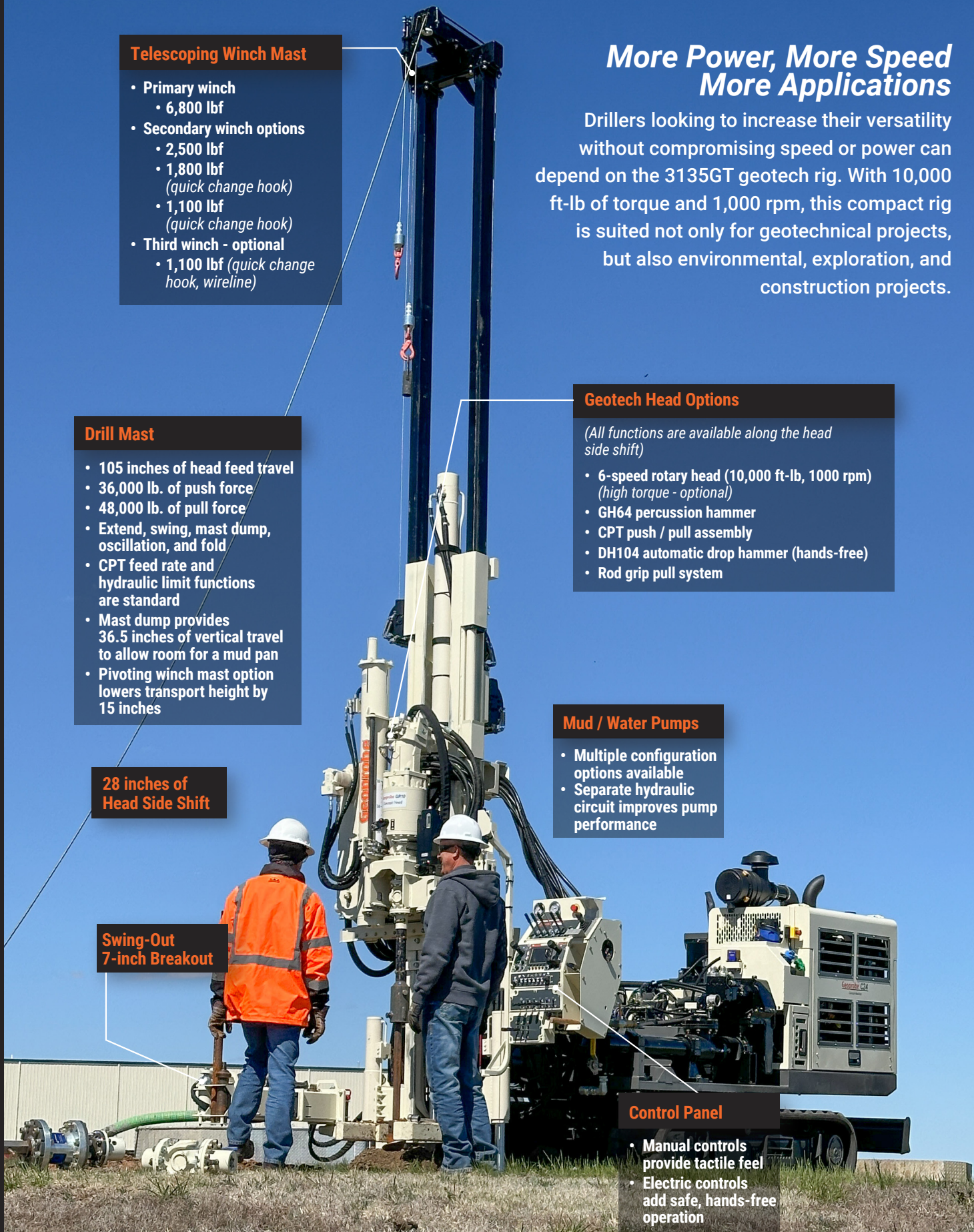
- 6-speed rotary head (10,000 ft-lb, 1000 rpm) (high torque - optional)
- GH64 percussion hammer
- CPT push / pull assembly
- DH104 automatic drop hammer (hands-free)
- Rod grip pull system

Mud / Water Pumps

- Multiple configuration options available
- Separate hydraulic circuit improves pump performance

Control Panel

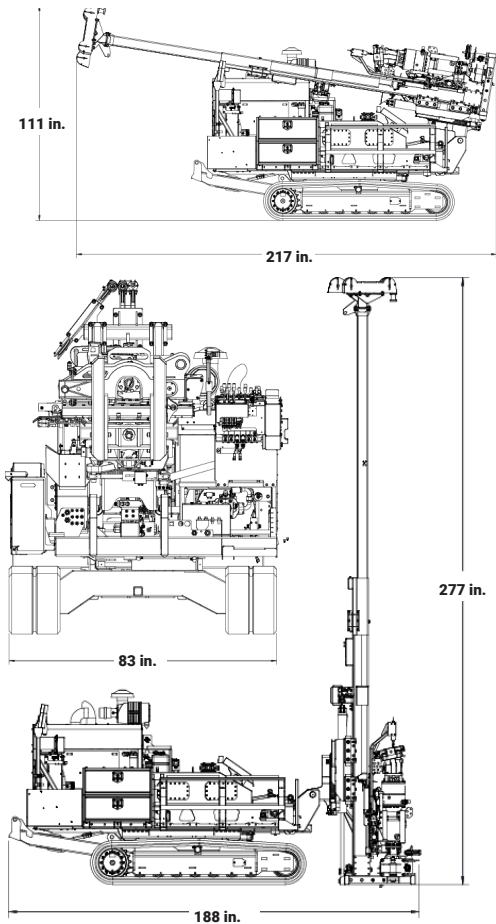
- Manual controls provide tactile feel
- Electric controls add safe, hands-free operation



WEIGHT & DIMENSIONS

Base Unit Weight: 14,500 lb. (6,577 kg)

With Typical Options: 16,240 lb. (7,371 kg)



TOOLING

Typical Geoprobe® Tooling for the 3135GT

- Geotechnical Tooling
 - SPT Sampling (Interlocking Split Spoon Sampler, Driven Casing SPT, HSA, Solid Auger, Mud Rotary)
 - Cone Penetration Testing (CPT)
- Direct Push
 - 60 in. Direct Push Tooling
 - Probe Rod Sizes: 3.75 in., 3.25 in., 2.25 in., 1.5 in., 1.25 in.*
 - Macro Core® Soil Sampling (MC5, MC7)
 - Dual Tube Soil Sampling (DT37, DT325, DT22)
 - Groundwater Sampling (SP22, SP16)
 - Prepacked Monitoring Well Installations (2.0 in., 1.5 in., 1.0 in., 0.75 in.)
 - Direct Image® Tooling
- HSA System (3.25 in., 4.25 in., 6.25 in.)

Rig shown with optional features. Dimensions subject to change without notice.

OPTIONS

Head Options

- Geotech Head Assembly (6-speed Rotary Head)
 - 10,000 ft-lbf
 - 1,000 rpm
- GH64 Percussion Hammer

Automatic Drop Hammer

- Automatic Drop Hammer, 140 lb.
- Expansion Kit
 - 170
 - 300
 - 340
- Weight, 65 kg

Mast & Winch

- Primary
 - 6,800 lbf
- Secondary
 - 2,500 lbf
 - 1,800 lbf (quick change hook)
 - 1,100 lbf (quick change hook)
- Third Winch
 - 1,100 lbf (quick change hook, wireline)
- Telescoping Dual Winch Mast
- Telescoping Triple Winch Mast
- Telescoping Pivoting Dual Mast
- Telescoping Pivoting Triple Mast

Breakout

- 7 in. Breakout
- Coring Upgrade Kit for 7 in. Breakout
- Breakout Storage Rack

Rotational Safety Cage

- Safety Cage

Water Swivels

- 31 Series Water Swivel ASM
- High Speed Water Swivel ASM with Float
- Float Sub NWJ Pin
- Float Sub NWL Pin
- Flot Sub HWL Pin

Water & Mud Pumps

- Moyno 3L8 Pump ASM 3135GT
- Moyno 3L6 Pump Kit w/ Table
- SPX40 Hose Pump Kit

Hydraulic Extruders

- 60 in. Extruder Kit
- Shelby Tube Cradle

Toolboxes & Rod Racks

- 5 ft. Rod Rack
- 10 ft. Rod Rack
- Double Toolbox 32.0 Front Open Black
- Spoon & Tube Holder Box

Mud Pans

- Aluminium 100 gal. Mud Pan
- Aluminium 95 gal. Mud Pan

Additional Options

- Nitrogen Charge Kit for GH60 Series Hammers
- Yoke Vise & MTG Bracker Kit Horizontal
- Drop Rack System w/ 150 Tank
- Drop Rack System with 150 Tank & 100 gal. Mud Tub
- Drop Rack with 50 gal. Pressure Washer System
- CPT Accessory Package
- Head Feed Pressure Control
- Measurement While Drilling (MWD)
- LIM Data Acquisition System

