

# Geoprobe® 3135GT Geotech Drill Rig

## More Power, More Speed More Applications

Depend on the 3135GT to increase versatility without compromising speed or power. With 10,000 ft-lb of torque and 1,000 rpm, this compact rig is engineered not only for geotechnical work, but also environmental, exploration, and construction projects.

### Geotech Head Options

(All functions are available along the head side shift)

- 6-speed rotary head (10,000 ft-lb, 1000 rpm)
- GH64 percussion hammer
- CPT push / pull assembly
- DH104 automatic drop hammer (hands-free)
- Rod grip pull system

### Mud / Water Pumps

- Multiple configuration options available
- Separate hydraulic circuit improves pump performance

### Wide Tracks

- Increased ground clearance
- Reduced ground pressure
- Improved off-road performance

28 inches of  
Head Side Shift

Swing-Out  
7-inch Breakout

### Telescoping Winch Mast

- Primary winch
  - 6,800 lbf
- Secondary winch option
  - 1,100 lbf (quick change hook)
- Third winch - optional
  - 2,500 lbf
  - 1,100 lbf (quick change hook, wireline)

### Drill Mast

- 105 inches of head feed travel
- 36,000 lb. of push force
- 48,000 lb. of pull force
- Extend, swing, mast dump, oscillation, and fold
- CPT feed rate and hydraulic limit functions are standard
- Mast dump provides 45 inches of vertical travel to allow room for a mud pan
- Pivoting winch mast option lowers transport height by 15 inches

### Control Panel

- Manual controls provide tactile feel
- Electric controls add safe, hands-free operation
- Measurement While Drilling (MWD) capable

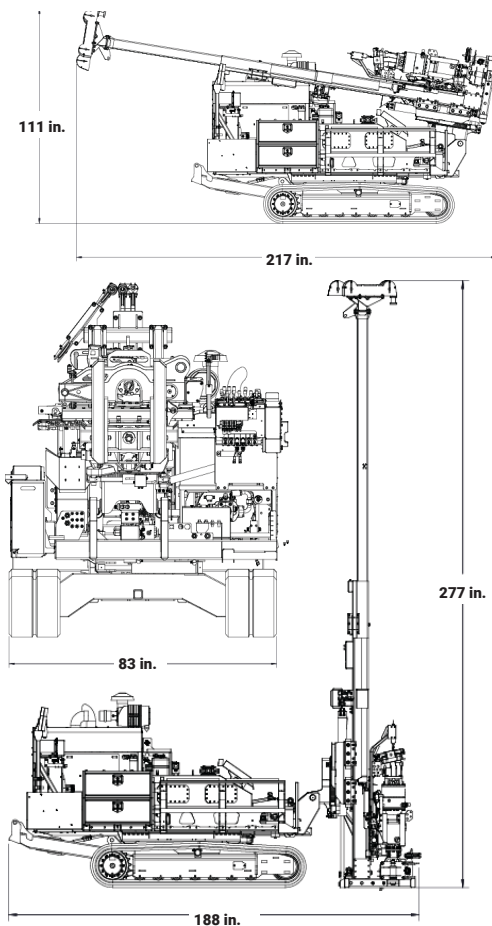




## WEIGHT & DIMENSIONS

Base Unit Weight: 16,860 lb. (6,577 kg)

With Typical Options: 18,600 lb. (7,371 kg)



## TOOLING

### Typical Geoprobe® Tooling for the 3135GT

- **Geotechnical Tooling**
  - SPT Sampling (Interlocking Split Spoon Sampler, Driven Casing SPT, HSA, Solid Auger, Mud Rotary)
  - Cone Penetration Testing (CPT)
- **Direct Push**
  - 60 in. Direct Push Tooling
  - Probe Rod Sizes: 3.75 in., 3.25 in., 2.25 in., 1.5 in., 1.25 in.\*
  - Macro Core® Soil Sampling (MC5, MC7)
  - Dual Tube Soil Sampling (DT37, DT325, DT22)
  - Groundwater Sampling (SP22, SP16)
  - Prepacked Monitoring Well Installations (2.0 in., 1.5 in., 1.0 in., 0.75 in.)
  - Direct Image® Tooling
- HSA System (3.25 in., 4.25 in., 6.25 in.)

Rig shown with optional features. Dimensions subject to change without notice.



## OPTIONS

### Head Options

- Geotech Head Assembly (6-speed Rotary Head)
  - 10,000 ft-lbf
  - 1,000 rpm
- GH64 Percussion Hammer

### Automatic Drop Hammer

- Automatic Drop Hammer, 140 lb.
- Expansion Kit
  - 170
  - 300
  - 340
- Weight, 65 kg

### Mast & Winch

- Primary winch
  - 6,800 lbf
- Secondary winch options
  - 1,100 lbf (quick change hook)
- Third winch - optional
  - 2,500 lbf
  - 1,100 lbf (quick change hook, wireline)
- Telescoping Triple Winch Mast
- Telescoping Pivoting Triple Mast

### Breakout

- 7 in. Breakout
- Coring Upgrade Kit for 7 in. Breakout

### Rotational Safety Cage

- Safety Cage

### Water Swivels

- 31 Series Water Swivel ASM
- High Speed Water Swivel ASM with Float
- Float Sub NWJ Pin
- Float Sub NWL Pin
- Float Sub HWL Pin

### Water & Mud Pumps

- Moyno 3L8 Pump ASM 3135GT
- Moyno 3L6 Pump Kit w/ Table
- SPX40 Hose Pump Kit
- Triplex, FMC L0618

### Hydraulic Extruders

- 60 in. Extruder Kit
- Shelby Tube Cradle

### Toolboxes & Rod Racks

- 5 ft. Rod Rack
- 10 ft. Rod Rack
- Double Toolbox 32.0 Front Open Black
- Spoon & Tube Holder Box

### Mud Pans

- Aluminium 100 gal. Mud Pan
- Aluminium 95 gal. Mud Pan

### Additional Options

- Nitrogen Charge Kit for GH60 Series Hammers
- Yoke Vise & MTG Bracker Kit Horizontal
- Drop Rack System w/ 150 Tank
- Drop Rack System with 150 Tank & 100 gal. Mud Tub
- Drop Rack with 50 gal. Pressure Washer System
- CPT Accessory Package
- Head Feed Pressure Control
- Measurement While Drilling (MWD)
- LIM Data Acquisition System



Geotech Head Assembly & Automatic Drop Hammer



Triple Winch & Mast Extension



7-inch Breakout & Spoon / Tube Holder



Hydraulic Extruder Kit, Rod Rack, and Spoon / Tube Holder

Videos, Photos, Specifications, Resources

[geoprobe.com/3135gt](http://geoprobe.com/3135gt)

